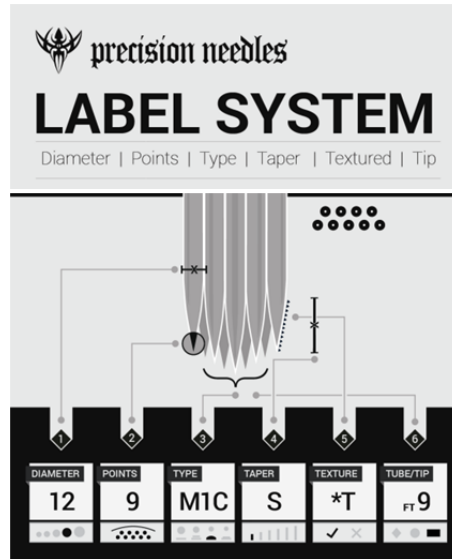
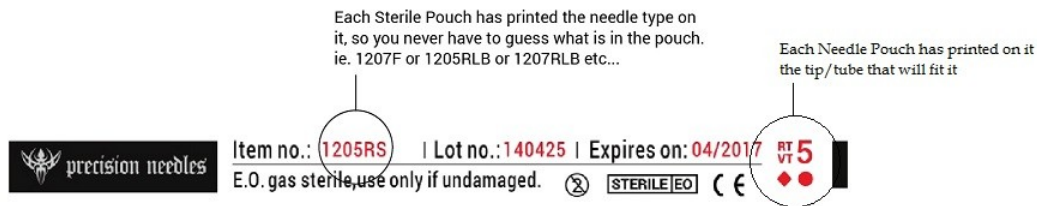


Precision Needles Technical Manual

This technical manual explains in detail how Precision Needles are labeled in order to learn about the many configurations that are offered. This document identifies six parts of the Precision Label System: Diameter, Points, Type, Taper, Texture, and Tube/Tip.


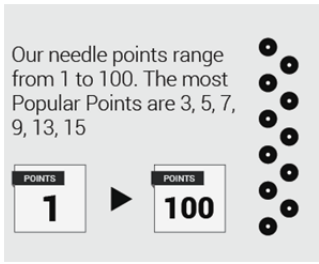
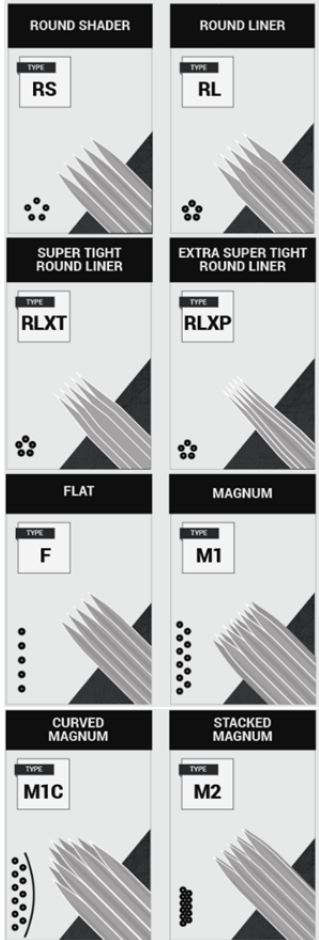



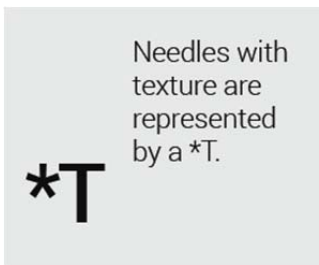
How to Read Precision Needle Labels?



In this example, you will see that each tattoo needle comes sterilized by EO gas individually packaged and labeled. The individual packaging indicates the needle type, tip/tube compatibility, lot no., expiration date, and sterilization method used. The following chart aids in reading the packaging:

Diameter	Points	Type	Taper	Texture	Tube/Tip
Needle Thickness	Number of Needles	Type of Needle	Needle Taper	Finishing	Tube/Tip Compatibility
#13: 0.40mm #12: 0.35mm #10: 0.30mm #08: 0.25mm #06: 0.20mm	Ranges from 1 to 100, most popular are: 3, 5, 7, 9, 13, 15	RS: Round Shader RL: Round Liner RLXT: Super Tight Round Liner RLXP: Extra Super Tight Round Liner F: Flat M1: Magnum M1C: Curved Magnum M2: Stacked Magnum	S: Standard LT: Long Taper DLT: Double Long Taper ELT: Extra Long Taper SLT: Super Long Taper ESLT: Extra Super Long Taper	*T: Textured	VT: Diamond Tip RT: Round Tip FT: Flat Tip

<p>Diameter:</p>  <p>.40mm 13</p> <p>.35mm 12</p> <p>.30mm 10</p> <p>.25mm 8 BugPin</p> <p>.20mm 6</p>	<p>Our Precision Tattoo Needles are available in 5 diameter options, as listed below. The higher the number, the wider the diameter will be. The wider diameter of the needles in a group, the heavier/faster ink will flow through them. The thinner the diameter, the slower and more controlled the ink flow will be.</p> <ul style="list-style-type: none"> ➤ #13 - 0.40mm in diameter and offer the fastest ink flow--perfect for filling in large areas ➤ #12 - 0.35mm diameter, and they're the most popular size tattoo needle overall ➤ #10 - 0.30mm diameter and they're the most popular size for lining work ➤ #8 - 0.25mm in diameter, and they offer a finer, more controlled ink flow ➤ #6 - 0.20mm diameter and offer the most control and finest ink flow
<p>Points:</p>  <p>Our needle points range from 1 to 100. The most Popular Points are 3, 5, 7, 9, 13, 15</p>	<p>"Points" refer to the number of needles in a grouping. We offer everything from 1 to 100 needles, or points, in a group. The most popular tattoo needle groupings purchased contain 3, 5, 7, 9, 13, or 15 points.</p>
<p>Needle Grouping:</p> 	<p>Round Shader (RS):</p> <ul style="list-style-type: none"> ➤ Loose grouping of medium or long taper needles ➤ Used for small area filling in color, blending, and shading a tattoo after the outline has been done ➤ Medium Taper RS typically used for color work, allowing more needle contact with skin to inject more pigment ➤ Long Taper RS typically used for black & grey work, allowing more time on skin with less trauma <p>Round Liner (RL):</p> <ul style="list-style-type: none"> ➤ Tight grouping of medium or long taper needles ➤ Used to create outline of the a tattoo ➤ Medium taper typically used for bold, fat lines, allowing more needle contact with skin to inject more pigment ➤ Long tapers typically used for thin lines, allowing more time on the skin with less trauma <p>Tight Round Liner (RLXT & RLXP):</p> <ul style="list-style-type: none"> ➤ Very thin and tight grouping of extra-long taper needles ➤ Used for very detailed work and fine lines ➤ Extra-long taper allows less contact with the skin to provide even sharper and more refined lines ➤ RLXT: Used for creating finer lines and working in tighter spaces ➤ RLXP: Used for doing the finest line work <p>Flat (F):</p> <ul style="list-style-type: none"> ➤ Generally 3-9 needles soldered side-by-side with no spacing ➤ Used to achieve tonal gradations, for shading, blending and detailed work <p>Magnum (M1, M1C, M2):</p> <ul style="list-style-type: none"> ➤ Generally two rows of needles spaced intermittently in a flat shape ➤ Used for filling, blending and shading a tattoo after outline is done ➤ Medium taper typically used for color, allowing more needle contact with skin to inject more pigment ➤ Long taper typically used for black & grey work, allowing more time on skin with less trauma ➤ M1: Typically used for filling large spaces, blending and shading ➤ M1C: Gentler on the skin, so they can better fill, blend and shade delicate areas ➤ M2: Allows filling in, blending and/or shading larger areas more quickly than standard magnums

<p>Needle Taper:</p> 		<p>The length of the taper on each tattoo needle in a grouping also impacts ink flow and control. We offer 6 taper length options which provide progressively higher levels of control while yielding finer streams of ink:</p> <ul style="list-style-type: none"> ➤ S: Standard Taper (1.5mm) ➤ LT: Long Taper (2mm) ➤ DLT: Double Long Taper (2.5mm) ➤ ELT: Extra Long Taper (3.5mm) ➤ SLT: Super Long Taper (5.5mm) ➤ ESLT: Extra Super Long Taper (8mm)
<p>Texture:</p>  <p>Needles with texture are represented by a *T.</p>		<p>Textured indicates the entire taper of the needle is not polished and the ink will be able to hold more ink as a result. If the needle is textured it will be denoted by *T. If it is polished (i.e. not Textured) it will not be denoted by any script.</p>
<p>Tube/Tip Compatibility:</p> <p>This indicates the recommended pairing for precision needles with Precision-tips/tubes.</p> <ul style="list-style-type: none"> ◆ VT = DIAMOND TIP ● RT = ROUND TIP ■ FT = FLAT TIP 		<p>Round needles are compatible with Diamond (VT) and Round (RT) tips. Flat and Magnum needles are compatible with Flat (FT) tips. Scroll to Page 5 to find the Needle and Tip Compatibility chart to find which tube/tip is compatible with your Needle.</p>

Needle Recommendation Guide:



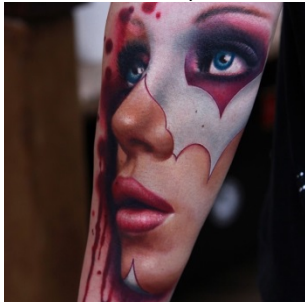
Black & Grey by Carl Grace



Horror Tattoo by Paul Acker



Traditional Tattoo by B. Feldman



Realistic Tattoo by Rich Pineda

There are many different styles and genres of tattoos. Your selection of needle configuration has to do with many factors including:

- Your style of tattooing
- Your preference
- Who you've learned from (your mentors opinions and style)
- Your general experience
- Things you have read and heard from other artists

We have classified a variety of tattoo genres, including Black & Gray, Horror, Old School/Traditional, and Realistic as you can see on the left. There are other classes and genres including New School, Japanese, Watercolor, to name a few.

Each of these artists uses different ink, needle configurations, machines with a few cross overs and not one of the supplies they use is the determining factor in the final outcome of the tattoo; it is a combination of their skill and the supplies they use. Each has gone through different brands, styles, machines, etc. to find the ones that work for them and then they stick to them and evolve over time as they learn from experience, their mentors, and other leaders in the industry.

In general no matter the type of tattoo, you will follow these guidelines:

- Use a Round Liner (RL), Super Tight Round Liner (RLXT), or Extra Super Tight Round Liner (RLXP) for lining your tattoo. The tightness of the liner (how close the needles are spaced together) you need will depend on the detail and fineness you are looking for in your lines.
- Use Round Shader (RS), Magnum (M1, M1C, or M2), or Flat (F) for shading, coloring, and blending. The needle type you choose will depend on personal preference and experience.
- Round Shader Needles (RS):
 - RS: Use to fill in small areas with color, shade, and blend after the outline has been done.
 - Medium Taper RS: Use for color work
 - Long Taper RS: Use for Black & Grey Work
- Flat Needles (F):
 - Used for tonal gradations, shading, blending and detailed work
- Magnum Needles (M1, M1C, M2):
 - M1: Used to fill in large spaces, blend and shade
 - M1C: Used to fill, blend and shade delicate areas
 - M2: Used to fill, blend and shade larger areas more quickly than standard magnums

No matter the type of tattoo, you will likely have to use a variety of needles. You will learn as you grow as an artist that your preferences in needle types may change over time based on your experience with different tattoos and your discussions with different artists about their techniques.

Here are a few suggestions to get started:

- **Black & Grey:** Round Liner (RL), Magnum (M1), Round Shader (RS)
- **Horror:** Round Liner (RL), Magnum (M1), Round Shader (RS)
- **Old School/Traditional:** Round Liner (RL), Magnum (M1), Round Shader (RS)
- **Realism:** Round Liner (RL), Super Tight Round Liner (RLXP), Magnum (M1), Flat (F), Round Shader (RS)
- **New School:** Round Liner (RL), Magnum (M1)
- **Japanese:** Round Liner (RL), Magnum (M1), Round Shader (RS)